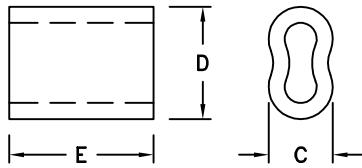
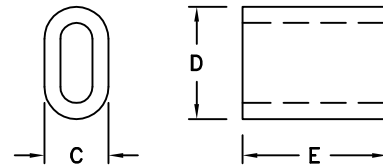


NICOPRESS PART NOS. FOR MILITARY STANDARD MS51844



TYPE I - TABLE 1A



TYPE II - TABLE 1B

TABLE 1A

DASH NO. PLAIN COPPER	NICOPRESS PART NO.	DASH NO. ZINC COATED COPPER	NICOPRESS PART NO.	DASH NO. TIN PLATED COPPER	NICOPRESS PART NO.	CABLE SIZE NOM.	MAXIMUM		
							C	D	E
40	17-1-B	20	27-1-B			1/32	.094	.140	.310
41	18-11-B4	21	28-11-B4	81	428-1.5-VB4	3/64	.14	.206	.440
42	18-1-C	22	28-1-C	82	428-2-VC	1/16	.18	.270	.440
43	18-2-G	23	28-2-G	83	428-3-VG	3/32	.24	.380	.440
44	18-3-M	24	28-3-M	84	428-4-VM	1/8	.34	.512	.750
45	18-4-P	25	28-4-P	85	428-5-VP	5/32	.37	.600	.750
46	18-6-X	26	28-6-X	86	428-6-VX	3/16	.45	.710	1.000
47	18-8-F2	27	28-8-F2	87	428-7-VF2	7/32	.48	.740	.94
48	18-10-F6	28	28-10-F6	88	428-8-VF6	1/4	.54	.84	1.19
49	18-13-G9	29	28-13-G9	89	428-10-VG9	5/16	.68	1.03	1.125
50	18-23-H5	30	28-23-H5	90	428-12-VH5	3/8	.75	1.143	1.312
51	18-24-J8	31	28-24-J8	91	428-14-VJ8	7/16	.87	1.32	1.813
52	18-25-K8	32	28-25-K8	92	428-16-VK8	1/2	.98	1.49	1.94
53	18-27-M1	33	28-27-M1	93	428-18-VM1	9/16	1.10	1.71	2.062
54	18-28-N5	34	28-28-N5	94	428-20-VN5	5/8	1.20	1.88	2.44

TABLE 1B

DASH NO. CORROSION RESISTANT STEEL	NICOPRESS PART NO.	CABLE SIZE NOM.	MAXIMUM		
			C	D	E
60	168-1-VB	1/32	.094	.143	.31
61	168-1.5-VB4	3/64	.140	.206	.44
62	168-2-VB4	1/16	.143	.236	.44
63	168-3-VC	3/32	.190	.304	.44
64	168-4-VG	1/8	.241	.387	.44
65	168-5-VM	5/32	.322	.500	.75
66	168-6-VP	3/16	.360	.567	1.00
67	168-7-VX	7/32	.430	.667	.900
68	168-8-VF2	1/4	.460	.724	1.150
69	168-10-VF2	5/16	.690	1.070	1.440

CORROSION RESISTANT STEEL SLEEVE DASH NO. 69 ADDED TO DRAWING		10/14/12	JET	JDQ	FILE NAME	3159ADC	THE NATIONAL TELEPHONE SUPPLY CO. CLEVELAND, OHIO 44103			
REVISIONS		DATE	BY	CHK BY	FILE LOCATION		DRN. BY	JET	TITLE	SEE ABOVE
TOLERANCES COMMERCIAL UNLESS NOTED		THIS DRAWING AND THE ASSOCIATED DOCUMENTS AND THE CONTAINED INFORMATION ARE THE PROPERTY OF THE NATIONAL TELEPHONE SUPPLY COMPANY. NO. PARTS THEREOF MAY BE REPRODUCED OR USED WITHOUT THE WRITTEN CONSENT OF THE OWNER.			STORAGE		CHK BY	FJM	DRAWING NO.	101-3159ADC
					SOFTWARE VER.		DATE	5/7/80		